



IT Un inaspettato mix di tecniche di lavorazione danno origine a Yoko, moquette appena approdata in casa Besana e che si fa notare per il suo aspetto innovativo ottenuto dall'accostamento dell'intramontabile effetto velluto alla più contemporanea lavorazione bouclé. Una combinazione armonica di texture capace di mantenere elevate caratteristiche tecniche.

EN An unexpected mix of production techniques have given rise to Yoko, a carpet recently launched by Besana and that is made noticeable for its innovative appearance achieved by the combination of the ever-popular velvet effect with the more contemporary bouclé. A harmonious combination of textures also able to maintain high technical characteristics.

ASPETTO / ASPECT	COMPOSIZIONE / COMPOSITION	COSTRUZIONE / CONSTRUCTION	PESO FELPA / PILE WEIGHT	PESO TOTALE / TOTAL WEIGHT	ALTEZZA FELPA / PILE THICKNESS
Velluto Bouclé / Cut loop	100% PA 6	Tufting 1 / 10"	± 1.350 gr/m <sup>2</sup>	± 2.575 gr/m <sup>2</sup>	± 5,00-7,00 mm
ALTEZZA TOTALE / TOTAL THICKNESS	PUNTI INSERITI / NUMBER OF TUFTS	COLORAZIONE / DYEING METHOD	SOTTOFONDO / BACKING	ALTEZZA ROTOLI / ROLL WIDTH	LUNGHEZZA ROTOLI / ROLL LENGTH
± 8,2 mm	276.000/m <sup>2</sup>	Tinto in pezza / Continue	Juta CB / Action back	2-4 m ± 2%	25-30 m
REAZIONE AL FUOCO / FLAMMABILITY	CLASSE DI RESISTENZA / RESISTANCE CLASS	CONDUCIBILITÀ TERMICA / THERMAL CONDUCTIVITY	RIDUZIONE SUONO / IMPACT SOUND REDUCTION	RIPETIZIONE PATTERN / PATTERN REPEAT	
B <sub>fl</sub> -s1	23/32	0,15 m <sup>2</sup> K/W	ΔLw 25 dB	400x400 cm	

#### CARATTERISTICHE TECNICHE / TECHNICAL CHARACTERISTICS



Uso alto residenziale



Uso medio contract



Bfl-s1



Pavimento  
riscaldato



Antistatico



Riduzione  
del suono



Resistenza  
raggi UV



Grado di  
morbidezza



Locali a  
basso  
traffico

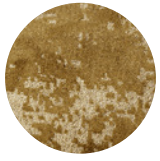


Locali a  
medio/alto  
traffico

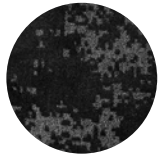


Locali con  
sedie a  
rotelle

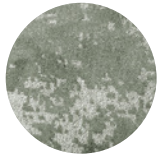
## Colori disponibili / Colours available



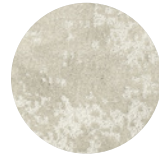
33



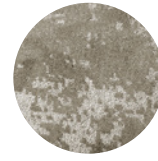
45



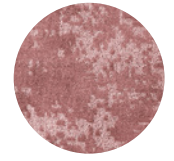
18



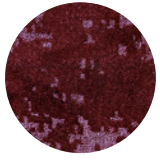
15



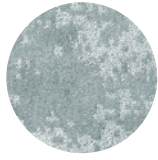
12



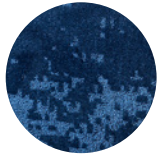
39



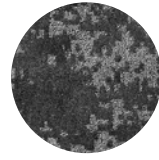
1



26



7



25